

Robertshaw

INDUSTRIAL PRODUCTS DIVISION

Self-Actuated Temperature Regulator RT-1001-T2

Features

1. Two-ply, seamless Robertshaw bellows for extra power and long life.
2. Over-temperature protection is standard.
3. Chevron "lifetime" stem packing made of Teflon*.
4. Quick-detach valve stem construction permits easy valve change.
5. Sturdy construction with cast iron frame.
6. Standard 3/4" sensing bulb to fit most installations.
7. Superior stainless steel valve design with soft seat for tight shut off.
8. Armored capillary tubing.
9. Setpoint adjustment wheel.
10. All components manufactured by a single source.

GENERAL

The RT-1001-T2 Tank Regulator is specifically designed for petroleum industry to control temperature on treaters, heaters, separators etc.

Without need for external power, Robertshaw Self-Actuated Temperature Regulators (SATR) offer final control of the temperature of a liquid, an air, or gas flow for domestic equipment, process, space, etc. on heating or cooling service.

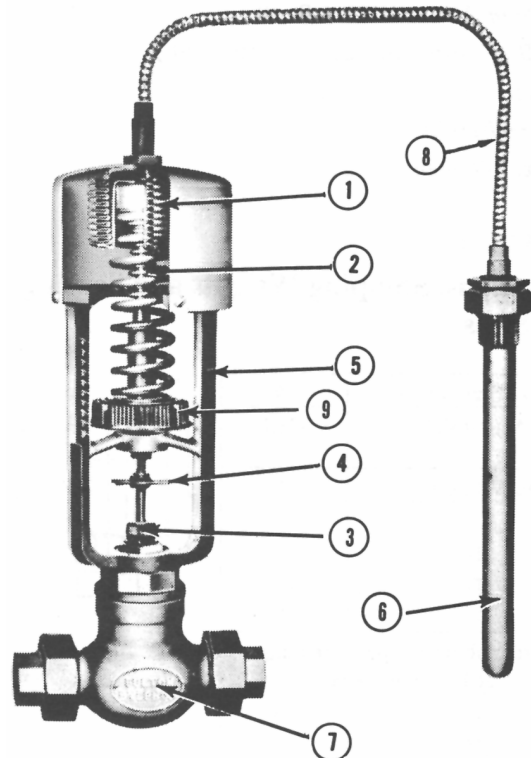
The SATR sensing bulb is installed in the medium being controlled while the SATR valve is located on the supply line of medium used as the heating/cooling agent. The SATR regulates the heating/cooling medium flow to maintain the desired temperature at the sensing bulb.

Other Robertshaw SATR series offer a selection of: **Throttling bands, Temperature Indication, Fail-safe** to prevent overheating, **Manual Positioning** in addition to automatic control, **Corrosive atmosphere resistant type**, **Small overall size** and **instantaneous heat exchanger service**.

Most cataloged Robertshaw SATR specifications are starting points from which many alternates to cataloged capillary, sensing bulb, separable well and valve may be FURNISHED TO MEET YOUR SPECIFIC application's needs.

RT-1001-T2 series features a wide throttling band and a small bulb size. It is particularly suited for applications where the heating surface is large while the storage capacity of the heated medium is small.

Tank Regulator for Oil Field Heaters-Treaters



Size: 3/4" Connection 1/2 "Port

HOW TO ORDER

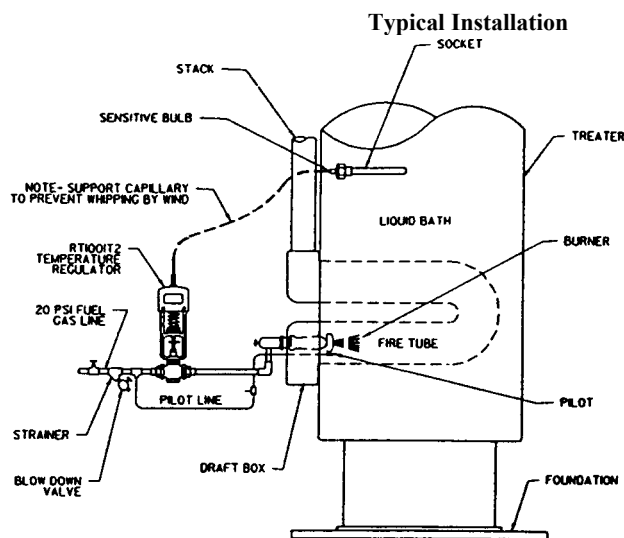
Specify:

1. Quantity.
2. Size.
3. Series Number.
4. Setpoint and/or setpoint range.
5. Capillary specs.
6. Sensing Bulb specs.
7. Valve type, action, ends, etc.
8. Other Features.
9. Shipping - Invoice Instructions.

RT-1001-T2 Heater/Treater SATR

The **RT-1001-T2** is cataloged with a direct-acting, all stainless steel, model CSS valve for heating service, 8 feet capillary (copper tube/brass armor), 12B type (threaded bushing) copper sensing bulb and sturdy cast iron frame. Other non-listed parts are made of non-ferrous materials. Alternate specifications are available.

Valve Type: Direct-Acting (close on temp. rise) single seated
Valve Size: 3/4"
Port Size: 1/2"
End Connections: Female threaded
Valve Trim Material: 316 St. St.
Valve Stem Material: 316 St. St.
Valve Body Material: CF8M (316 St. St.)
Packing: Teflon chevrons
Pressure drop limit: 30 psi
Approx. full open Cv: 2.3



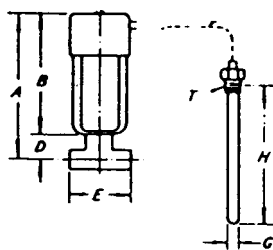
Installation of Self-Actuating Temperature Regulator on Treater

The RT-1001-T2 series is available with any of the temperature ranges listed below. The rang should be selected so that the setpoint falls within the upper third of the range span.

40° - 100°F	165° - 230°F	270° - 330°F
60° - 120°F	175° - 230°F	295° - 360°F
85° - 145°F	200° - 255°F	320° - 405°F
115° - 180°F	205° - 265°F	390° - 480°F
125° - 190°F	235° - 295°F	
135° - 200°F	255° - 315°F	

RT-1001-T2 Dimensions, Shipping Weights and Sensing Bulb Sizes

Valve Size Inches	3/4
Direct-Acting Valve, Type	CSS
Shipping Wt., Lbs.	29
A	13-25/32
B	11-7/8
D	1-29/32
E	4
Standard bulb for temperature ranges beginning at 120°F or above	
G	3/4
H	8
T*	3/4
"Standard bulb for temperature ranges beginning below 120°F.	
G	1
H	14
T*	1



Alternates include:

Capillary:

Length 1 ft. up to 50 ft.

Materials Copper or 304 stainless steel tube: plain or with Plastisol sheathing; and St. St. tube with St. St. armor. Sensing Bulb:

Type 12 BP 316 stainless steel

Type 54 copper, externally finned

Type 6 plain for open vessels; copper or 304 St. St. with or without Plastisol sheathing. Separable Wells: (for sensing bulb protection or ease of bulb removal)

Material 316 St. St.

Type GA (mounting throat one size larger than bulb size)

Type GB ("super close" mounting thread same as bulb size)

Robertshaw

U.S.A. and CANADA

Robertshaw Industrial Products Division

1602 Mustang Drive

Maryville, TN 37801

Phone: (865) 981-3100 Fax: (865) 981-3168

<http://www.robertshawindustrial.com>

Exports

Invensys Appliance Controls

2809 Emerywood Parkway

P.O. Box 26544

Richmond, Virginia 23261-6544

Phone: (804) 756-6500 Fax: (804) 756-6561

Note 1- IMPORTANT - If valve seat leakage can cause a problem or hazard, the following should be taken into account, Maximum leakage of new valves, single-seated Type CSS is 0.05% of full open valve capacity.

Note 2 - IMPORTANT - Damage to or failure of the thermal element with loss of charge will ordinarily result in the regulator going to the "cold" bulb position. The valve stem moves "up" (toward the bellows) thus opening the direct-acting CSS valve.



An Invensys company

Q-4092 (9/01)